

River Basins

Vocabulary

river basin



Vocabulary

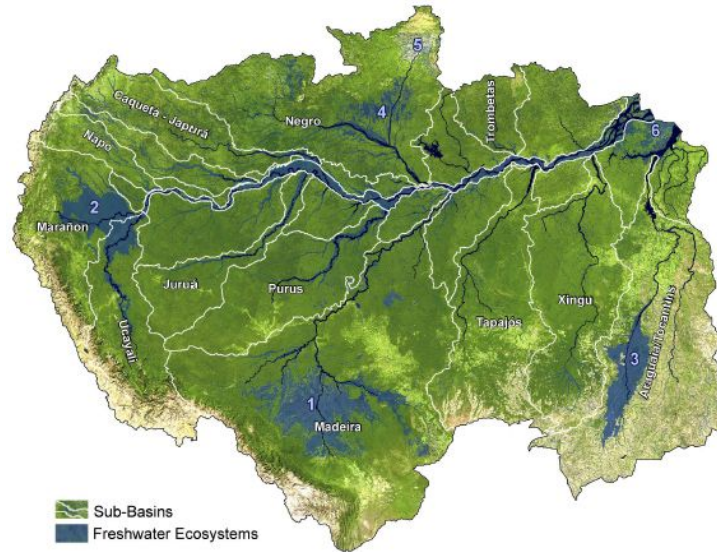
stream



(c) 2008 - Bruce Hannold - BC Perceptions Limited

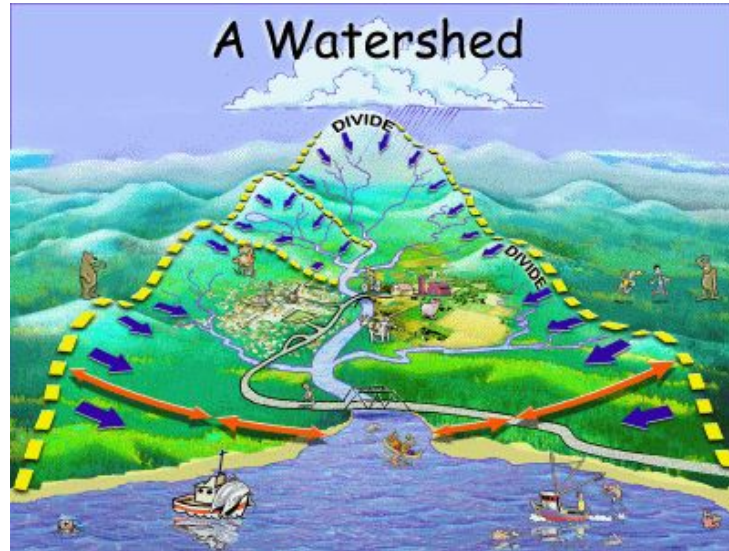
Vocabulary

tributary



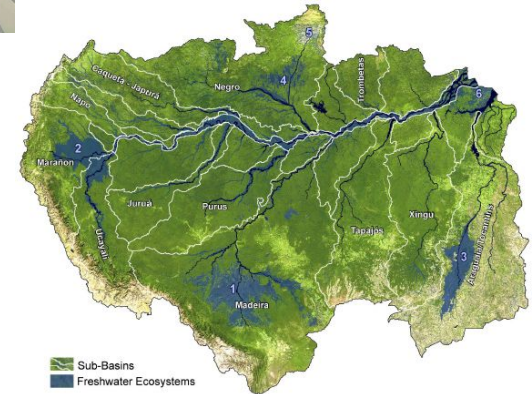
Vocabulary

watershed



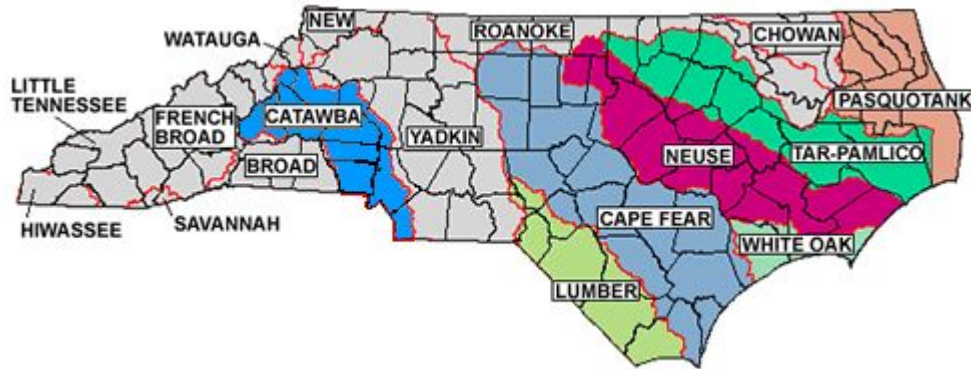
What is a River Basin?

- A **river basin** is the portion of land drained by a river and its tributaries (afluentes)
 1. The land that is **drained** by many streams (*drenada por muchas corrientes*)
 2. The streams flow **downhill** (*fluir cuesta abajo*)
 3. The streams **combine** and eventually form one river



North Carolina River Basin

- There are 17 different river basins in NC
- We live in the **Catawba River Basin**.
 - 8.1% of the state of North Carolina.
 - It is the eighth largest river system in the state and contains 3,042 miles of streams!



Catawba River Basin



Drainage Basin

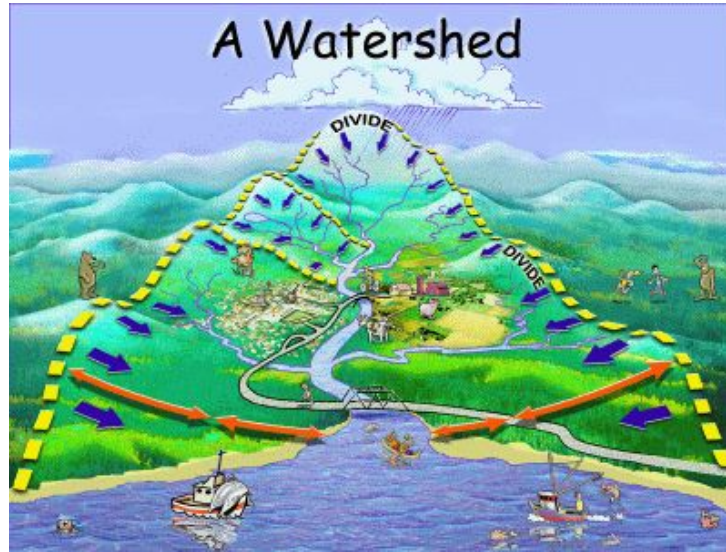
A drainage basin is an area that drains into a large body of water

Mississippi River Drainage Basin



Watershed

Watershed - a smaller area of land that drains to a smaller stream, lake, or wetland



Drainage Basin, River Basin, Watershed

- Drainage basins, river basins and watersheds are areas of land that drain to a particular water body (lake, stream, river or estuary)
 - There are many smaller watersheds within a river basin.

Watershed Pollution

1. Stormwater (aguas pluviales) flows across streets and lawns (céspedes)
2. The water picks up (recoger) chemical pollutants (contaminantes)
3. All pollution in a river basin accumulates (acumula) in the common water body



Catawba River Basin Video

<https://www.youtube.com/watch?v=ut130iDhaKo>