

Water Pollution

Daily Objective

Content Objective:

- Evaluate issues of water pollution **by** creating posters illustrating sources of pollution.

Language Objective:

- Label sources of pollution on a diagram.
- Describe in writing how sources of pollution affect water sources.



Essential Question

What are examples of sources of pollution which we have in our homes? How do these impact the environment?



Pre-write

1. With your partners, make a list of sources of pollution.

- Ideas:

- House
- School
- Business
- Factory
- Farm

2. With your partner, discuss what factors affect the rate of pollution of an area?

- Hint: Think about population size, climate.....

Vocabulary

Point source pollution



Vocabulary

Nonpoint source pollution



Vocabulary

Fertilizer



Vocabulary

Pesticide



Vocabulary

Landfill leachate



Vocabulary

wastewater



Vocabulary

stormwater



Vocabulary

Arsenic



Groundwater Pollution

- Groundwater pollution can contaminate wells and drinking water
- Wastewater is water that has been contaminated by pollution



Types of Water Pollution

- **Point Source Pollution-** contaminants have a source we can identify
 - Factory, car



- **Nonpoint Source Pollution-** contaminants do not have a source we can identify
 - Several farms in same region



Major Sources of Water Pollution

- **Agriculture**
 - Fertilizers
 - Pesticides
- **Industrial**
 - Factories
 - Powerplants
- **Mining**
 - Surface mining
- **Landfills**
 - Landfill Leachate



Nonpoint Water Pollution

- Reaches bodies of water through streets and sewers
 - Example: stormwater
 - Pesticides and fertilizers are washed off lawns
 - Animal feces float away from farms
- 96% of water pollution is from nonpoint source pollution



Arsenic Contamination

- **Arsenic** is a poisonous element that is sometimes dissolved inside of groundwater
 - Water wells are lined with arsenic; this can get into the groundwater



Sources of Pollution Worksheet

Pesticides



Animal Waste



Litter



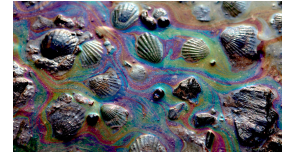
Trash



Fertilizers



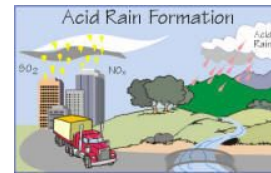
Dumped Oil



Pet waste



Acid Rain



Sediment/Erosion



Stormwater Runoff



Grass Clippings/Sticks

