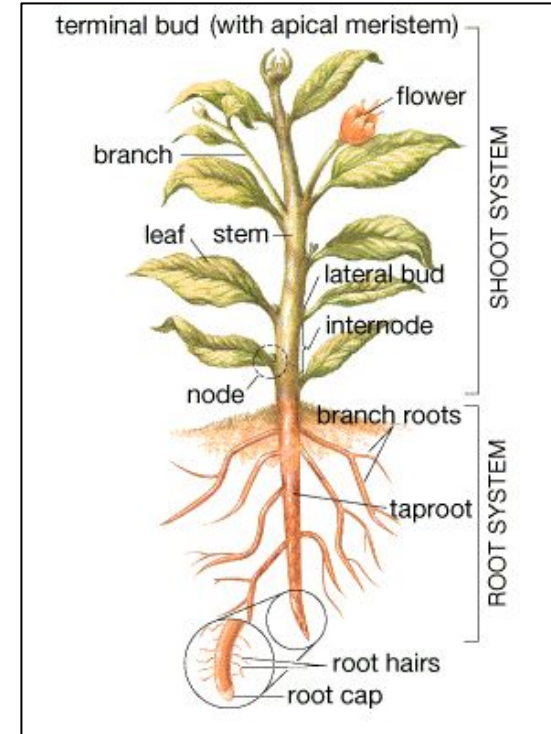


# Plants

# Plant Body

- Shoot system = leaves + stem  
*El sistema de rotoño = leaves + stem*
- The root system is the part of the plant that is underground  
*El root system es la parte de la planta que es subterráneo*
- Meristem = cells that divide for life of plant, can give rise to all plant structures  
*Meristem = células que se dividen por la vida de la planta, pueden dar lugar a todas las estructuras de la planta*



# Plant Body

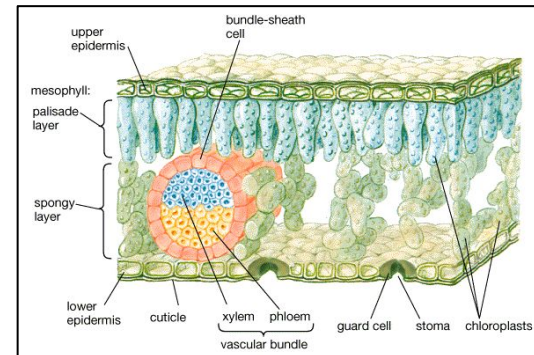
The major functions of the leaf are:

*Las principales funciones de la hoja son:*

- ❖ Exposes surface to sunlight
- ❖ Major site of photosynthesis
- ❖ Conserves water
- ❖ Provides for gas exchange



<http://thedesignleaf.com>



# Plant Body

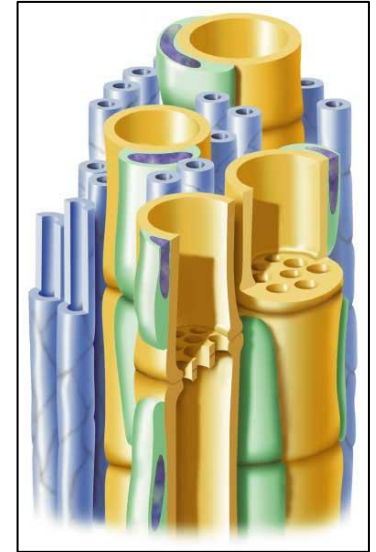
The major functions of the stem are:

*Las principales funciones de la hoja son:*

- ❖ To hold up the leaves to receive sunlight
- ❖ For transport of substances



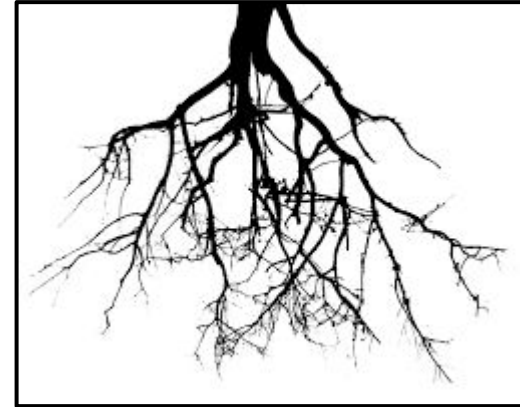
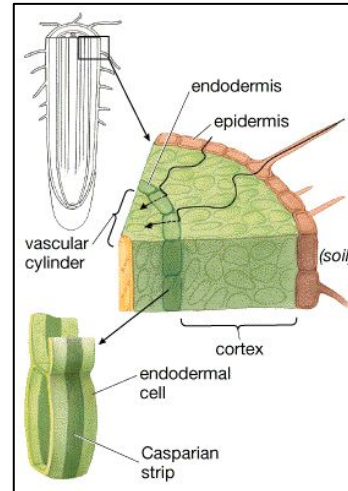
<https://www.emaze.com/@ALWFQQT0/Unit-5:-Plants>



# Plant Body

The major function of the roots are:  
*Las principales funciones de las raíces son:*

- ❖ to anchor the plants in the soil
- ❖ to take up water and minerals from the soil



<https://nicosteyn.wordpress.com/problem-root/>

# Flowering Plants

A flower has both male and female organs.

*Una flor tiene tanto male y female órganos.*

- ❖ The male part, the stamen, produces pollen.
- ❖ The female part, the pistil, produces eggs.
- ❖ The sepal encloses and protects the bud.
- ❖ The petal attracts pollinators.

